



Teach | Equip | Serve

520 Thayer Drive, Richland, WA 99352

[www.richlandredeemer.org](http://www.richlandredeemer.org)

[office@richlandredeemer.org](mailto:office@richlandredeemer.org)

office: 943-4967



### *SUNDAY WORSHIP SCHEDULE*

*9a WORSHIP SERVICE*

*10:15a SUNDAY SCHOOL/PRECONFIRMATION CLASS*

*10:30a ADULT BIBLE STUDY*

**Voters' meeting Oct. 8 immediately following service.**

## NEITHER POVERTY NOR RICHES

One of the most challenging and difficult questions facing us today is that of the proper attitude toward money and possessions. An excellent book written about 25 years ago by Craig L. Bloomberg helps address that question. The book is titled *Neither Poverty nor Riches: A Biblical Theology of Possessions*. The title is from Proverbs 30:8-9 which reads, *"Remove far from me falsehood and lying; give me neither poverty nor riches; feed me with the food that is needful for me, lest I be full and deny You and say, 'Who is the Lord?' or lest I be poor and steal and profane the name of my God."* This request of a wise man tells us that both riches and poverty leave us in want. A rich person looks to his riches and possessions, blindly believing that he does not need God. His greedy and foolish interest is to seek more wealth. The wise person would not want poverty because he would deceive himself into thinking that he needs to steal in order to have enough. This wise man prays, "Give us this day our daily bread" (Fourth Petition: Luther's Small Catechism).

Mr. Bloomberg's book offers some insightful conclusions:

- **Material possessions are a gift from God and meant for us to enjoy.** In the beginning, God looked at His creation, and He said it was "Good."
- **Material possessions are one of Satan's best tools to turn our hearts away from God.** Adam and Eve coveted the attractive but forbidden fruit of the garden. Because they ate the forbidden fruit, everything was cursed thereafter. In their sin, they rejected God. In 1 Timothy 6:10 we read, *"For the love of money is a root of all kinds of evils."* Jesus tells us that we *"cannot serve God and money"* (Matthew 6:24).
- **Faithful stewardship will be evident in people's lives when their hearts are transformed.** One's entire life should be dedicated to God, but a particularly telling area for determining one's commitment involves one's finances.
- **There are extremes of riches and poverty which are in themselves intolerable.** God views hoarding and accumulating without giving as

a sin. We are to seek moderation, and we have an obligation to take care of our own and those in need that they might see the hand of God and not despair.

- May God grant us His grace to view, manage, and use our gifts in ways that give Him honor.

Pastor Todd

---

### STEWARDSHIP CORNER

Do you express your gratitude to God for your gifts? Being thankful is a prominent theme in God's Word. Living with an attitude of gratitude helps us appreciate the gifts both physically and spiritually that we receive. As God's people, we express our gratitude as we give thanks to God throughout the day. Our thanksgiving is demonstrated when we use our faith that God has given us to live in obedience to His Word. Our thankfulness is illustrated by the lifestyles that we lead. Our gratitude can be expressed at every level and in every activity of life. As Paul wrote to the Corinthians "So, whether you eat or drink, or whatever you do, do all to the glory of God" (*1 Corinthians 10:31*).



**OPERATION CHRISTMAS CHILD** – It's that time of year! Shoeboxes are available to pickup and fill for children around the world. There is now an Amazon storefront at [amazon.com/shop/operationchristmaschild](https://www.amazon.com/shop/operationchristmaschild) for ideas or to purchase gifts. The deadline to return the filled boxes is Sunday, Nov. 12.

## **ELDERS CORNER – OCTOBER 2023**

### WHAT IS SO IMPORTANT ABOUT A CHRISTIAN/BIBLE-BASED EDUCATION FOR OUR CHILDREN?

Many parents are seeking an alternate education for their children from the public school system after discovering what they're really learning (or not learning) there. One really good alternative is to enroll your child in a Christian parochial school. So, what are the advantages of sending your child to a Christian parochial school?

Well, six things come to mind (and there are probably others I haven't thought of):

1. Safety – Freedom from drugs, bullying, gangs, and generally anything violent.
2. Christian schools utilize Christian teachers, administrators, and staff members who supply positive role models for the students.
3. Christian schools are usually characterized by high involvement and support from parents and families.
4. Christian schools usually offer a positive Christian environment in academic pursuits and extra-curricular activities.
5. Christian schools are usually characterized by high academic rigor because of accreditation.
6. And most important!!! - Christian schools teach the Bible, and all the other academic subjects are integrated with biblical truth.

Typically, American children are in school about 170 days/year or 2,210 days for 13 years of kindergarten through 12th grade education. That's a lot of days. And that's a lot of potential influence these educators have over our children, especially in children from homes where parents are not actively engaged with their children. During those school days, our children will learn biology, grammar, algebra, history, art, physical education, sports, social skills, geography, and many other useful things. But underlying whatever education our children receive is a worldview. A worldview is a lens through which our children will look at the world. It addresses origin, morality, meaning, and destiny, among other areas. This worldview is the education they absorb, either directly or subtly,

becomes the foundation for the rest of their lives. And this worldview, by its nature, is religious, whether it has a foundation of Jesus Christ, or one of secular humanism, or of government, or of worship of creation rather than the creator as we see in our over emphasis on climate change, or of ultimately the age-old religion of self-indulgence. It is this worldview and how it is fully integrated with advantage number 6 (above) that makes all the difference.

Christian schools make a commitment at all levels to teach the Word of God as the worldview. Many Christian schools, from the elementary level on up, have specific classes or courses where biblical content and Bible doctrine are specifically and intentionally taught. But perhaps the real strength of Christian education is that the Bible is integrated into every other academic subject. That way the students understand that the truth of God's Word relates to every aspect of their lives.

*Jon Lindberg, Redeemer Elders.*

---

### **REPEAT BOUTIQUE TO CLOSE**

On August 31<sup>st</sup>, Chaplaincy's Board of Directors voted to discontinue Chaplaincy's thrift store program. **Repeat Boutique's last day of business will be November 17<sup>th</sup>.** The Board and Executive Team cited financial viability, safety, and security concerns for the ultimate decision of closure.

Chaplaincy's thrift store program was originally founded to help supplement the deficit of the hospice house. While Repeat Boutique has had some strong months, ultimately it has struggled to meet the original intent to offset costs of the Hospice House. Chaplaincy is committed to being good stewards of our resources; with that comes the difficult decision to end a program that has held a special place at this agency for many years.



# SUMMER YOUTH ACTIVITIES



Lutherhaven VBS for kids 3-11 was held at Bethlehem's campus on June 26 to 30. Everyone learned about the Big Table that Jesus is preparing for all who accept his invitation.







**Lutherhaven Day Camp, Coeur d'Alene Idaho:** Redeemer sponsored 5 children (Lacey Turner, Aubrey Bepple, Roxy Grall and her friend Makahla, and Colton Lyon) to attend Lutherhaven Day Camp this year. They were glad they got to go and had many enjoyable experiences in their Pathfinders camp. They did things they have never done before. Climbing the giant ladder, high ropes, met lots of new people (loved helping the little kiddos). Loved people they connected with. Worship and prayer was a good experience. There was a lot of 1:1 with their counselors. They learned how others walks of life are different than their own.





# FALL KICK OFF PICNIC

The congregational picnic to kick off fall education activities was held at Flat Top Park on Sunday, Sept. 10. Thank you to the boards of Education, Congregational Care, Fellowship and the Elders for putting on the picnic. Thank you to everyone who attended! Without you it would not have been such a success!



*Steven Rogers playing Giant Jenga.*



*Enjoying fellowship.*



*Chef Mark Rogers serving up some tasty grilled hotdogs.*







*A little one on one basketball between Kylie Landrum and Jen Turner.*



*Enjoying a lunch of grilled hot dogs, potato salad, watermelon, baked beans, and chips.*



*Riley and Kelsey Yarbrough playing cornhole. Check out that form!*



*Pastor Todd and Denise Rogers serving up Root Beer Floats to the Uhrich family.*





**SENIOR LUNCHEON** is taking on a new format this year. Rather than a potluck the entire meal will be prepared by Lois Stutheit. Everything will be provided (food, tableware, etc.) All you need to bring is your appetite! The next monthly Senior luncheon is at noon on Friday, Oct. 6. Come enjoy a good home cooked meal, fellowship, and a devotion.

**MEN'S GROUP** will meet Saturday, Oct. 14 at 9 am in the Fellowship Hall. All men of Redeemer and Emmaus-Pasco are invited to enjoy food, fellowship, devotion.



Since January 2022 Compassion Kitchen has served 1,646 noon meals on Tuesdays at Redeemer Lutheran Church in Richland. We received a Covid-19 Community Care Grant from the district as well as donations from within our congregation. We have a group of guests who come weekly. When I asked several of them why they like coming to Compassion Kitchen the number one response was for the fellowship and that they feel that we truly care about them. The second reason is that the food is always good. One guest said she plans her day around Compassion Kitchen. It has been a blessing to get to know our guests and care for them.

**DUST DEVILS BASEBALL:** Twenty-one youth and chaperones attended the game at Dust Devil stadium on August 25. A faith concert was also held outside the stadium as part of the night's activities. All enjoyed the experience. Unfortunately, no one took pictures at the game.

A pastor asked an older farmer, decked out in bib overalls, to say grace for the morning breakfast.

"Lord, I hate buttermilk," the farmer began. The visiting pastor opened one eye to glance at the farmer and wonder where this was going.

The farmer loudly proclaimed, "Lord, I hate lard."

Now, the pastor was growing concerned.

Without missing a beat, the farmer continued, "And Lord, you know I don't much care for raw white flour" The pastor once again opened an eye to glance around the room and saw that he wasn't the only one to feel uncomfortable.

Then the farmer added, "But Lord, when you mix them all together and bake them, I do love warm fresh biscuits. So Lord, when things come up that we don't like, when life gets hard, when we don't understand what you're saying to us, help us to just relax and wait until you are done mixing. It will probably be even better than biscuits. Amen."





# Redeemer Lutheran School Exploratory Committee

## Progress Report

The presentation the Redeemer Lutheran School Exploratory Committee gave to the June 18 Voters' Meeting was well received. Voters encouraged the school committee to continue exploring the viability of a Lutheran school at Redeemer – and committee members continue to explore.

In early July, the school committee learned from a recommended local architectural firm that site plans generally cost between \$7.5K and \$18K, depending on complexity. The firm said it would have to know school committee short-term and long-term goals and needs before they could provide an accurate cost estimate. The school committee has since developed a draft list of short-term and long-term goals, internal and external building needs, and questions needing answers.

A school committee member walked through the Parsonage with two building contractors July 26. The school committee is trying to determine a more accurate cost estimate for demolishing or remodeling the Parsonage for a school.

School committee members visited Bethlehem Lutheran August 11 to learn from Principal Eric Haan and Pastor Josh Hileman about Bethlehem's funding structure and use of space.

School committee members enjoyed a 2-hour meeting with LCMS NW District Director of Schools Jim Scriven August 18. Among other things, Jim provided pertinent information about types of schools, the healthiest way to fund a school, and the cost and availability of qualified teachers. Committee members received also a list of contacts and lots of encouragement.



During an August 29 phone conversation with LCEF NW District VP Mike Madison, a school committee member received information about LCEF loan interest rates, renewable 3-year lines of credit, property analysis, and the current cost of "new builds."

During an August 31 phone conversations with LCMS Director of School Ministry Al Freeman a school committee member received information about Soaring Education, a recognized service organization that sets up micro schools for many Christian denominations.

You can listen to Al Freeman and Jim Scriven discuss Lutheran schools at <https://www.youtube.com/watch?v=xNLGkVMYgH8>

The school committee was happy to welcome Robin Buck and Carl Thomsen to its July 7 meeting. The committee is thankful for Axel Gruen's participation. Axel was a Lutheran school principal for 18 years in Indiana, Oregon, and Washington.

The school committee recalls Jim Scriven's inspirational words of wisdom, going forward: *Redeemer may seek unity among members, but it is enough to have most members of a congregation believe they can accomplish a goal, even if they do not have all of the answers. It is enough to have most of the answers for a congregation to step out in faith.*

The school committee plans to bring a resolution to a Voters' Meeting or Special Voters' Meeting in the not-too-distant future.



Both are

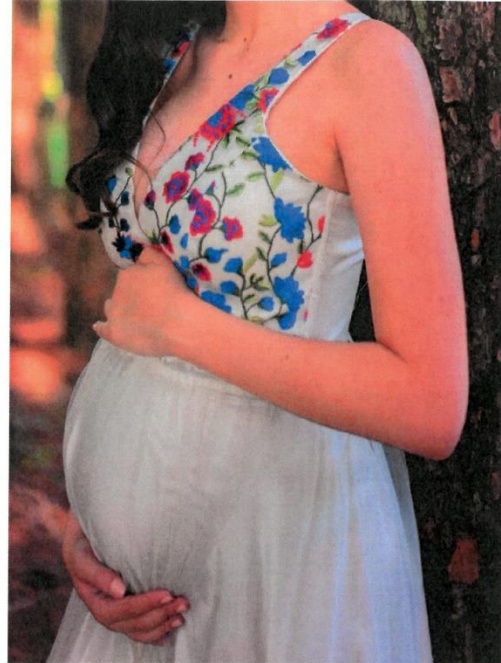
Worthy

of

Love

Life

& Truth



## Prayer Vigil to End Abortion

### Where:

Public Right of Way

Outside of Planned Parenthood

7426 W. Bonnie Pl.

Kennewick

### When:

Daily September 27—November 5

**For more information:**

**Sign-Up:** [40daysforlife.com/Tricities](http://40daysforlife.com/Tricities)

**Email:** [kennewick40daysforlife@yahoo.com](mailto:kennewick40daysforlife@yahoo.com)

**Phone/Text:** (509) 980-1736 Christie

## *October Birthdays*

- 1 Brooke Bond
- 4 Robert Bepple, Edgar Buck
- 6 Twilene Shanks
- 7 Miriam Hagedorn
- 8 Andrew Ritzmann
- 11 Barbara Lee, Mark Reeder
- 13 Don Darsow, Elliott Rebic
- 16 Aubrey Bepple, Susie Lindberg, Chuck Fordham
- 19 Will Landrum
- 20 Wayne Roundy, Shirley Clarkson
- 24 Wallace Ruff
- 26 Tanner Beach
- 27 Elsa Bepple, Kim Riordan, Ruth Shook, Lacey Turner
- 29 Roy Wolfe
- 30 Gunner Grall, Reta Siefken, Steve Gano
- 31 Gary Sebade

## *Anniversaries*

- 4 John & Karin Cagle
- 17 Matt & Lisa Rogers
- 19 Ben & Gail Kroll



## ***November Birthdays***

- 3 Gloria Bentley
- 4 Linda Briggs, Zachary Woodall, Matt Schorzman, Dasha Perham, Elizabeth Ripley
- 5 Diane Zaloudek, Pam Roundy
- 7 Det Wegener
- 8 Myrl Briggs
- 10 June Jaquish
- 12 Robin Buck, Mary Gruen
- 13 Casey Gant
- 16 Rich Vance
- 17 Marci Grall
- 24 John Beitz, Bret Uhrich
- 25 Kara Uhrich
- 26 Gary Fisher
- 27 Zane Gibson, Millie Dubbs
- 28 Rebecca Redeker
- 30 Samuel Rogers

## ***Anniversaries***

- 10 Bob & Marj Littlejohn
- 22 Dan & Lisa Niebuhr

PRAYERS – Please let the office know of any changes to the prayer page by calling 943-4967 or emailing [office@richlandredeemer.org](mailto:office@richlandredeemer.org). \*Indicates friends/family.

HOMEBOUND:

Pearl Raabe  
Ruth Shook  
Reta Siefken  
Bernie Simpkins  
Eileen Stixruud

CANCER:

John Schug  
Beth\* (neighbor of Linda Einspahr)  
Barbara Connell\* (sister-in-law of Sandy Guymon)  
Rev. James & Ann Gier\* (son & daughter-in-law of Marlene Paris-Ufkes)  
Kevin Raabe\* (son of Pearl Raabe)  
Sandi Sheeley\* (sister of Karin Nickola)  
Deanna Snider\*

HEALTH CONCERNS:

Bob & Cheryl Evenson  
Sally Grego  
Elaine Kutrowski  
Pearl Raabe  
Ruth Shook  
Reta Siefken  
Bernie Simpkins  
Eileen Stixruud  
Bobbie Van Buren  
Bev Wetzler  
Gregg Lee\* (son of Barbara Lee)  
Jody Schug\* (wife of John Schug)  
Phillip Turner\*

MILITARY:

Sam Willhoite  
Darion Woodall  
Brandin Bunch\*  
Jacob Cagle\*  
Brandon Gano\*  
Byron Gano\*  
Matthew Gano\*  
James Hare\*  
Sean Williams\*

